

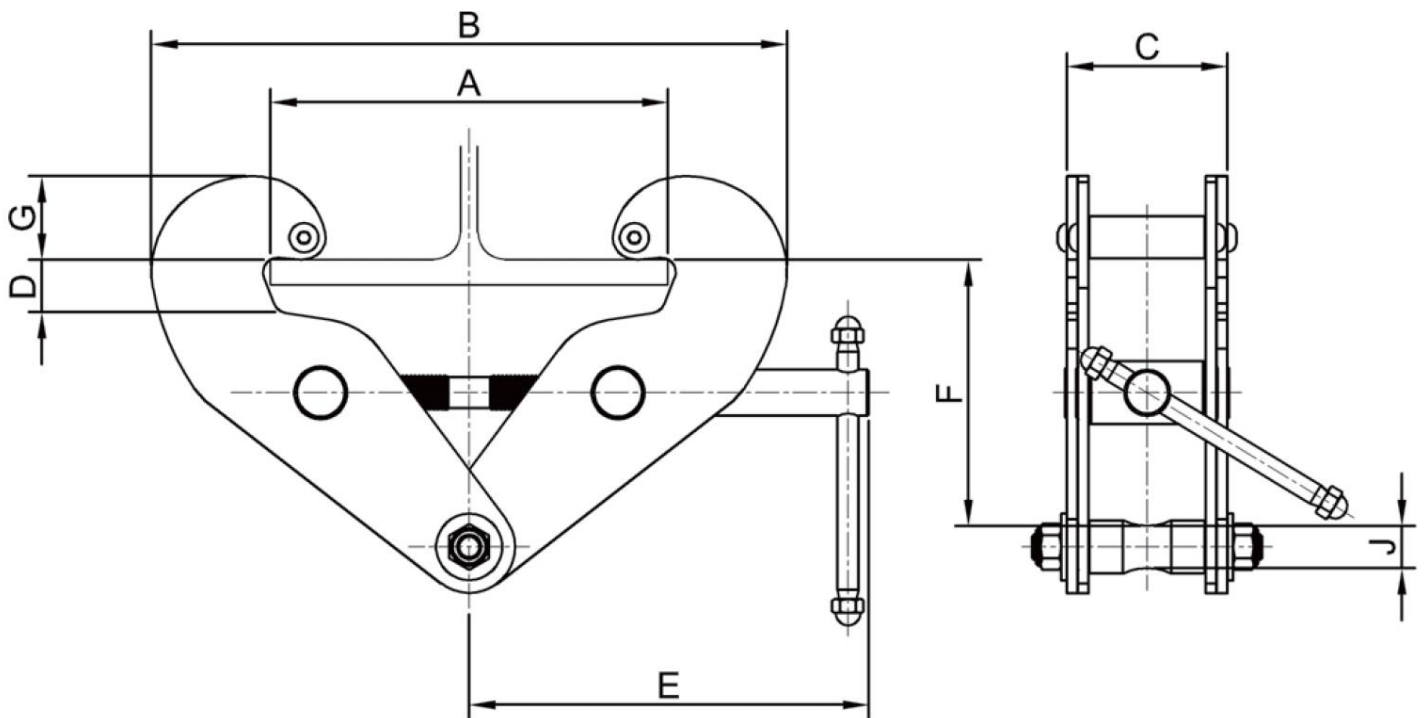
Certification:

Each unit comes fully certified with a test certificate or an EC Declaration of Conformity stating compliance with the essential health and safety requirements of the Machinery Directive 2006/42/EC.

Technical Data

Product Code	Capacity (tonne)	Dimensions (mm)								Net Weight (kg)
		A	B	C	D	E	F	G	øJ	
BC-0100	1.0	75-210	182-328	77	26	190	144-117	52-38	ø20	4.0
BC-0200	2.0	75-210	182-328	85	26	190	144-117	52-38	ø20	4.5
BC-0300	3.0	75-305	214-460	107	35	240	224-179	58-40	ø22	8.0
BC-0500	5.0	75-305	214-460	121	35	240	224-175	58-40	ø28	10.0
BC-1000	10.0	120-350	295-510	182	36	300	222-171	71-54	ø43	24.5

Technical Drawing



Due to our policy of continual product development, dimensions, weights and specifications may change without prior notice. Please check with your Tiger sales team when ordering.